



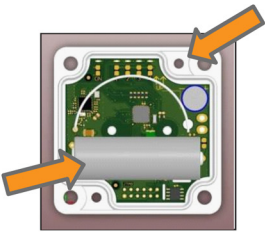
EQUIPMENT SUPPLIED:

- OMS outdoor radio temperature sensor with casing
- Mounting set consisting of 2 dowels (5mm) and 2 screws (3 x 30mm)
- Mounting instruction



1. ASSEMBLY

The OMS outdoor radio temperature should not be exposed to direct sunlight. Furthermore the sensor should not be mounted near any further heat sources. The device is designed for wall mounting..



Before the housing can be mounted on the wall, it must be opened. After opening the 4 screws, the housing top can be removed.

The lower housing part including the electronic assembly can now be mounted using the supplied mounting kit in a convenient place. The mounting holes to be used are shown in the figure.

During assembly, please note the given installation position indicated on the electronic board and on the label.

Before mounting the housing top, the device needs to be switched on and, if necessary, be configured.



2. CONFIGURATION

The device will be delivered off-state. The operation mode according to EN13747-4 in factory setting: T mode. The nominal transmission interval is 15 minutes. The transmission of telegrams is done unencrypted.

3. GENERAL

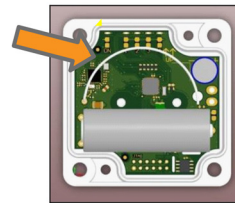
Switching on and off the device, as well as configuring the operation characteristics takes place using a conductive object – typically a slot screwdriver or a phase tester is used.

By creating a temporary electrical connection with the above mentioned object between two contacts being located on the electronic board, the desired action is carried out and confirmed by LED´s.



4. SWITCHING ON AND OFF (contact „ON“)

The contacts, that must be bridges are marked on the electronic board with „ON“ and are located at the position shown in the following figure.



Switching on the device takes place via briefly touching (ca. 1 sec.) the contacts highlighted in the figure.

As a result of this process, the LED „ON“, which is located next to the two contacts, flashes briefly. After that, the device starts.

During the starting procedure, the LEDs, which are located next to the configuration contacts 1, 2, 3 and 4, switch on successively and then turn off together.

If the device is switched on already, the LED „ON“ flashes briefly two times. No further action takes place.

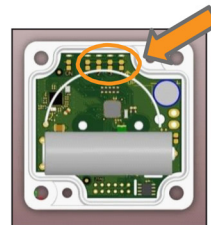
Switching off the device takes place via touching and holding (ca. 5 sec.) the contacts highlighted in the figure.

As a result of this process, the LED „ON“, which is located next to the two contacts, flashes 10-times. After that, the device switches off. During the switch-off process, the LEDs, which are located next to the configuration contacts 1, 2, 3 and 4, switch on together and then switch off successively.



5. ADJUSTMENT OF THE OPERATION BEHAVIOR

The configuration of the operation behavior takes place via briefly touching (ca. 1 sec.) the contacts 1-4 highlighted in the following figure



The following parameters can be changed as follows:

- The usage of the encryption process
- The operating mode according to EN 13757-4
- The transmission interval.