

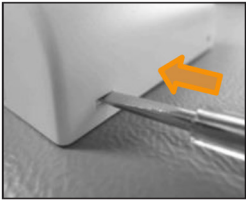


EQUIPMENT SUPPLIED:

- OMS radio humidity and temperature sensor with casing and mounting plate
- 2 AA-size alkaline batteries
- Mounting set consisting of 2 dowels (5mm) and 2 screws (3 x 30mm)
- Mounting instruction

1. ASSEMBLY

The OMS radio humidity and temperature sensor should not be exposed to direct sunlight. Furthermore the sensor should not be mounted on an outside wall, near to an outer door or at a distance of less than 1 m to a heater. The distance from the floor should be at least 1,5m. The device is designed for wall mounting. Before the casing is ready for wall mounting it has to be opened.



The locks at the bottom of the casing must be released one after another. For that a slotted screwdriver is put into the upper part of the opening.



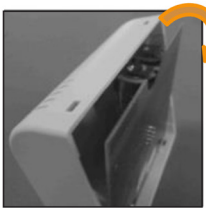
Repeat this process at the second lock. After that the front cover can be lifted from the mounting plate.

The mounting plate is marked with UP and DOWN for the correct orientation. It can now be mounted on the wall with the help of the supplied dowels and screws.

⚠ The screw head may not extend beyond the edge of the mounting plate, otherwise the electronics can be damaged when closing the housing!

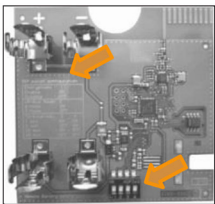
The long holes arranged in a circle at a distance of 60mm can be used for easy mounting on a flush-mounting or wall mount box.

2. REMOVING THE PRINTED CIRCUIT BOARD



Now the printed circuit board is tilted out of the front cover by pulling at the edge of the semicircular cavity

3. CONFIGURATION

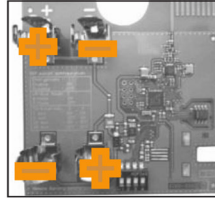


Encryption	1	
Enable	ON	
Disable	OFF	
wM-Bus Mode	2	
S-Mode	ON	
T-Mode	OFF	
TX-Interval	3	4
1 min	ON	ON
5 min	OFF	ON
10 min	ON	OFF
15 min	OFF	OFF

On the assembly side the desired operating parameters can be set by using the DIP switch. Information to the switch are located on the circuit board. If there is no DIP switch equipped, all parameters are programmed and cannot be configured subsequently.

4. INSERT THE BATTERIES

Now the batteries will be inserted. Therefore it is important to secure the correct polarity. Here standard AA cells with a voltage of 1.5 V are used.



5. PCB MOUNTING

Thereafter the circuit board with the batteries ahead is placed back into the front cover.



Attention on the Arrangement!

On the circuit board and on the label of the Front cover it is marked with arrows up.



As a last step, the front cover together with the electronics is clipped on the mounting plate. For that the front Cover is hinged to the upper edge of the mounting plate and then pressed firmly.

If the OMS radio humidity and temperature sensor is equipped with a sabotage contact only two transmission cycles should elapse between the inserting of the batteries and the complete installation. Otherwise a permanent error in the telegram is transmitted.