



The radio temperature sensor SIN.EQPR01X can be integrated into an existing wireless M-Bus OMS network and provides reliable temperature measurement data. The room temperature can be monitored wirelessly at any time.

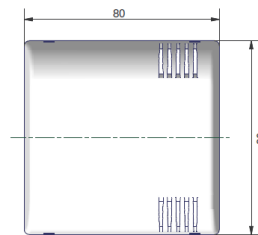
A further advantage of the temperature sensor is its easy assembly. The configuration can be done at the factory or local via dip switches. The battery life is up to 12 years.

The 2 AA batteries are easily replaceable and have a reverse polarity protection. With an optional sabotage contact the device can detect the release of the cover from the mounting plate and sends an alarm via radio to the receiver.

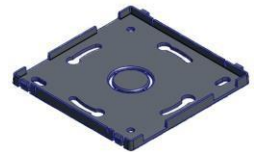
DIP-Switch-Mode:

Encryption	1	
Enable	ON	
Disable	OFF	
wM-Bus Mode	2	
S-Mode	ON	
T-Mode	OFF	
TX-Interval	3	4
1 min	ON	ON
5 min	OFF	ON
10 min	ON	OFF
15 min	OFF	OFF

Front view (in mm):



Back cover:



FEATURES

Temperature range: 0°C to 65°C

Measuring accuracy: $\pm 0,5^{\circ}\text{C}$

Actual measured value is transmitted every 15 minutes (configurable)

Can be used in the S- or T-mode

Easy mounting with mounting plate and clip-on-cover

Storage temperature: -20°C to 70°C

AES-128 encryption mode 5 according to OMS V3.0.1

2 replaceable AA cells

Battery life time up to 12 years

ORDERING CODE

SIN.EQPR01X